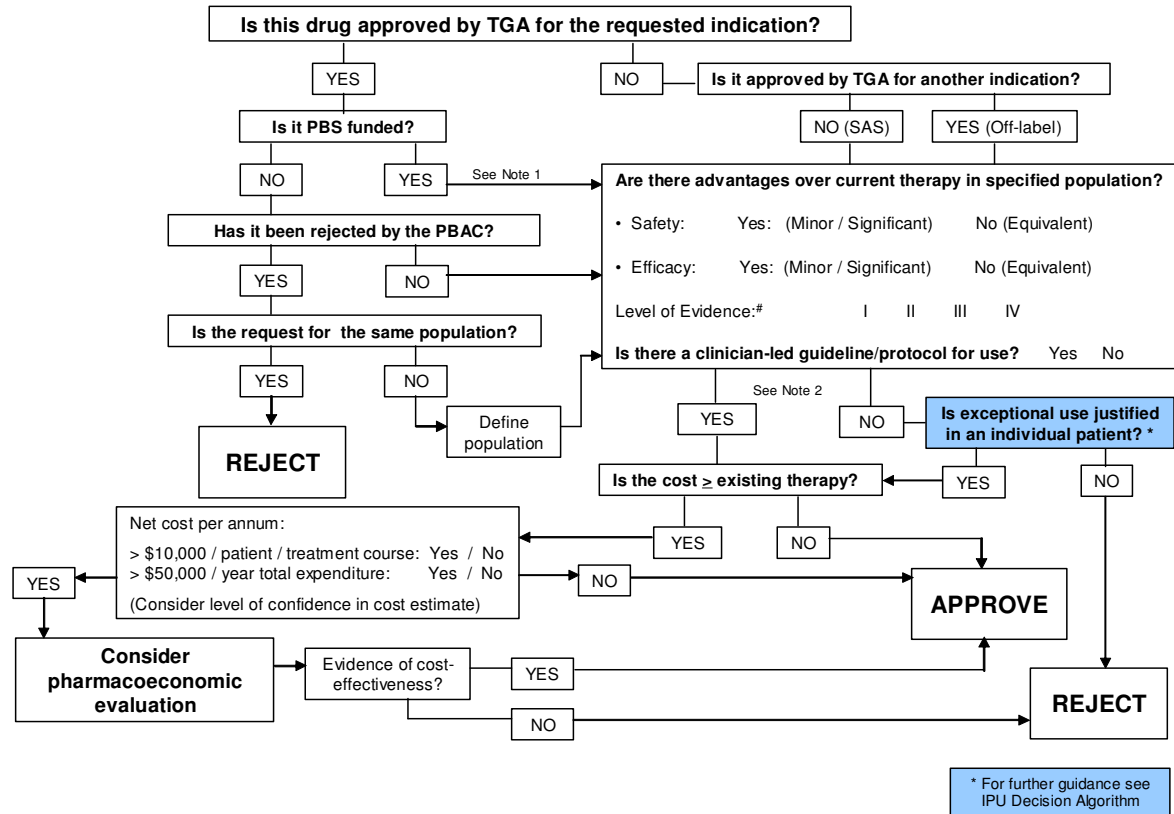


**Decision Algorithm for evaluation of medicines for formulary listing in public hospitals**



**Note 1:**  
 Where a PBAC evaluation has been undertaken, the DTC may choose to accept the PBAC decision without further evaluation

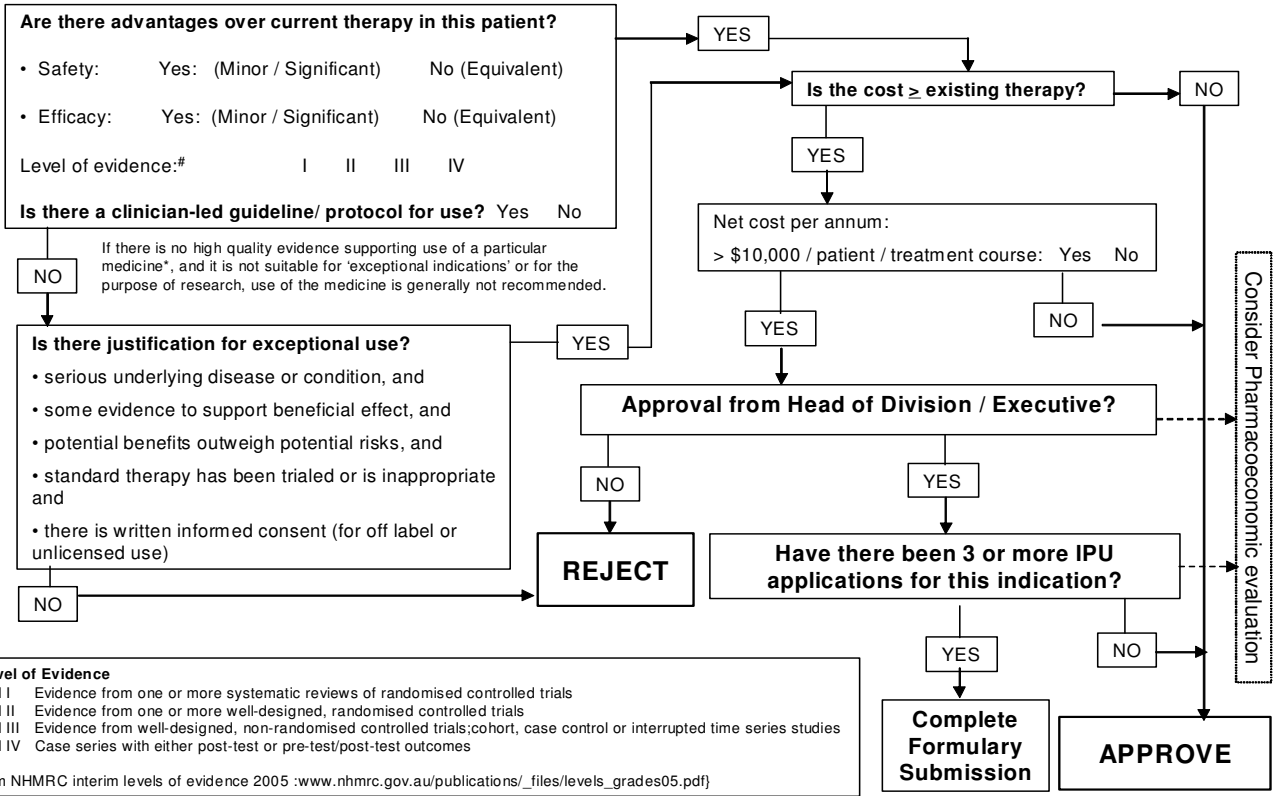
**Note 2:**  
 Adequacy of evidence for comparative safety and efficacy should be assessed by the DTC in light of the clinical circumstances.\* The need for a defined guideline/protocol for use should be determined on a case by case basis.

**\* Evaluation of evidence**  
 For more detailed guidance on evaluation of evidence, see Gazarian et al. MJA 2006;185: 544-548. In particular, refer page 545: Assessing appropriateness – evaluation of evidence

**# Level of Evidence**  
 Level I Evidence from one or more systematic reviews of randomised controlled trials  
 Level II Evidence from one or more well-designed, randomised controlled trials  
 Level III Evidence from well-designed, non-randomised controlled trials; cohort, case control or interrupted time series studies  
 Level IV Case series with either post-test or pre-test/post-test outcomes  
 (From NHMRC interim levels of evidence 2005 :www.nhmrc.gov.au/publications/\_files/levels\_grades05.pdf)

**Decision Algorithm for evaluation of medicines for individual patient use (IPU) approval**

**IPU Decision Algorithm: \*Is exceptional use justified in an individual patient?**



**# Level of Evidence**  
 Level I Evidence from one or more systematic reviews of randomised controlled trials  
 Level II Evidence from one or more well-designed, randomised controlled trials  
 Level III Evidence from well-designed, non-randomised controlled trials; cohort, case control or interrupted time series studies  
 Level IV Case series with either post-test or pre-test/post-test outcomes  
 (From NHMRC interim levels of evidence 2005 :www.nhmrc.gov.au/publications/\_files/levels\_grades05.pdf)

**\* Evaluation of evidence**  
 For more detailed guidance on evaluation of evidence, see Gazarian et al. MJA 2006;185: 544-548.  
 In particular, refer page 545: Assessing appropriateness – evaluation of evidence